



# GAT MONTHLY MEMBERSHIP PROGRESS REPORT

Results as of: 4/30/2023

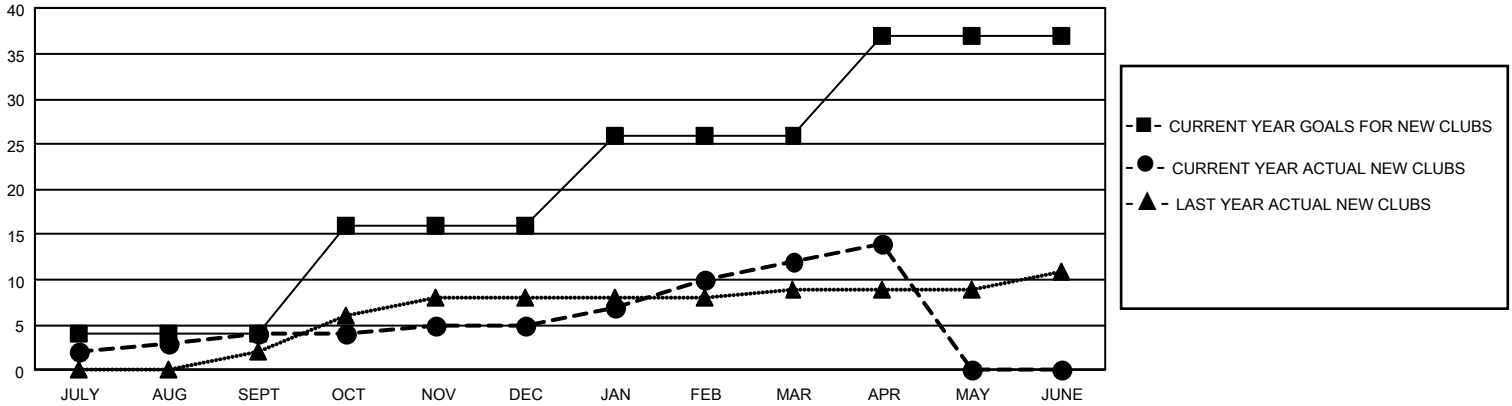
## GAT Constitutional Area 2

REPORT DOES NOT INCLUDE CLUBS IN UNDISTRICTED AREAS.

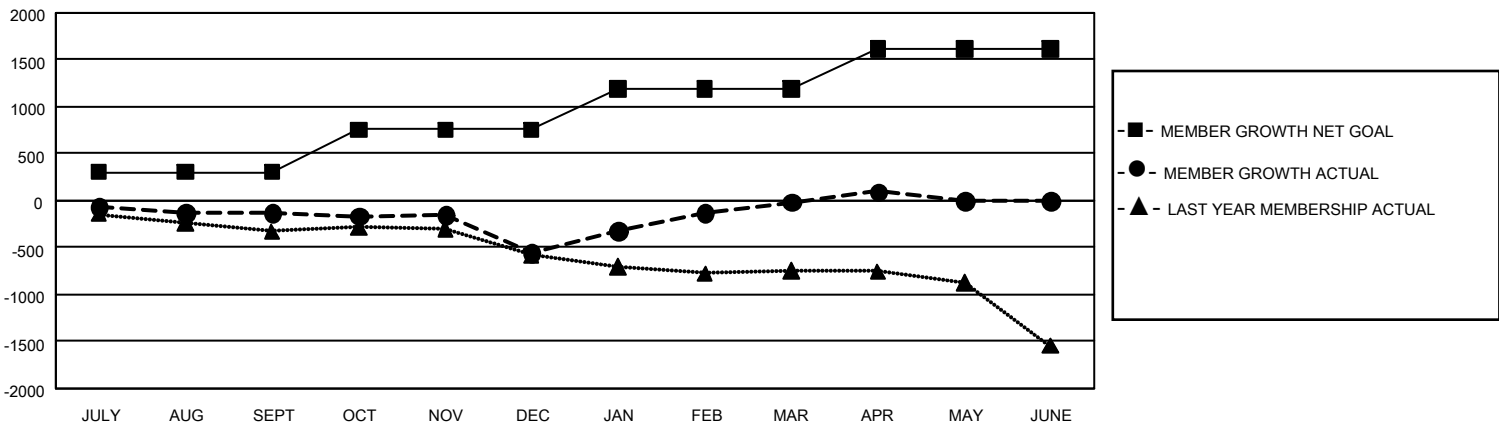
Clubs			
RESULTS FOR 2022-2023			
QUARTER	NEW CLUB GOAL	NEW CLUBS	DROPPED CLUBS
JULY/AUG/SEPT	12	4	5
OCT/NOV/DEC	36	1	11
JAN/FEB/MAR	30	7	5
APR/MAY/JUNE	33	2	3

Members			
RESULTS FOR 2022-2023			
QUARTER	MEMBER GROWTH NET GOAL	MEMBER GROWTH ACTUAL	DROPPED MEMBERS ACTUAL (including transfers)
JULY/AUG/SEPT	306	618	652
OCT/NOV/DEC	450	935	1,254
JAN/FEB/MAR	438	1,253	632
APR/MAY/JUNE	426	422	257

GOALS AND ACTUAL NEW CLUBS CUMULATIVE



GOALS AND ACTUAL MEMBERS CUMULATIVE



DROPPED CLUBS: 24	
<b>DROPPED MEMBERS</b>	
DECEASED	377
CLUB CANCELLED	101
OTHER	2,317
<b>TOTAL</b>	<b>2,795</b>

719 CLUBS OF 1,263 ADDED 1 OR MORE NEW MEMBERS

[CLICK HERE FOR CUMULATIVE MEMBERSHIP DATA](#)

GENDER DISTRIBUTION	
MALE	17,521 (64.46%)
FEMALE	9,657 (35.53%)
NON BINARY	0 (0.00%)
PREFER NOT TO ANSWER	2 (0.01%)
<b>TOTAL FAMILY UNIT MEMBERS</b>	<b>4,902</b>
<b>FAMILY MEMBERS PAYING HALF DUES</b>	<b>2,518</b>